

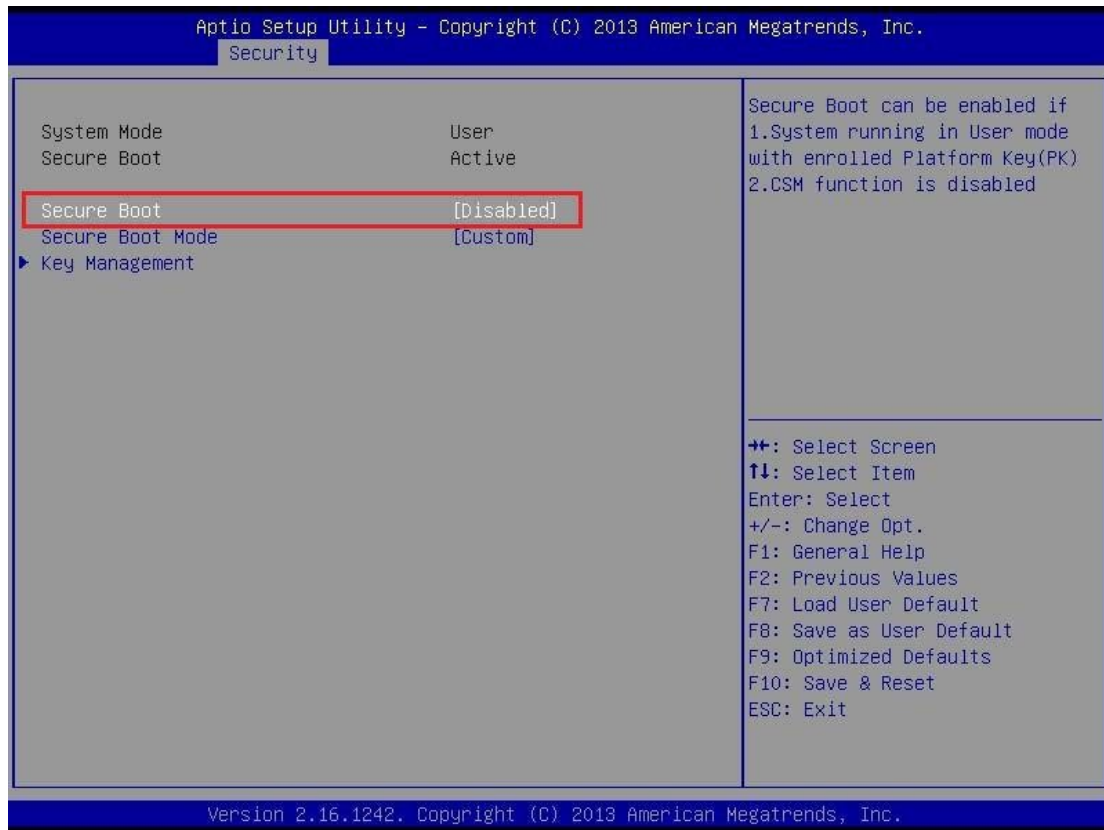
# EC Flash SOP for SHELL

Document Revision: v1.2

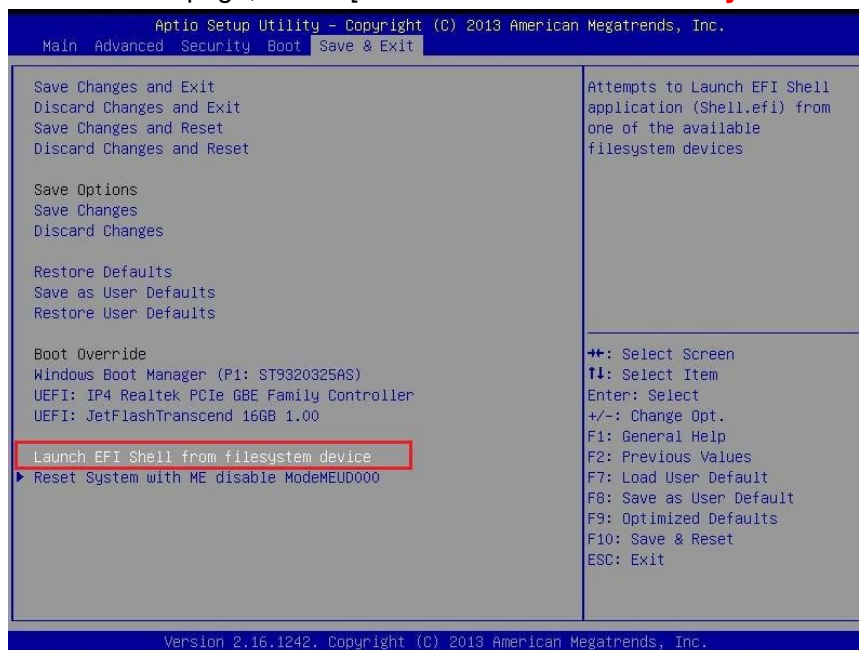
Issue Date: 2018/07/17

Author: Junyi. Zhong

1. Copy "EFI" and "ROM" folder including files to EFI Shell bootable drive.
2. Insert USB thumb drive to target machine
3. Press [DEL] to boot to Setup Utility
4. In Security page, enter Secure Boot menu to Disable Secure Boot



5. Press [F10] to save and reset Setup then boot to Setup Utility again
6. In Save & Exit page, Select [Launch EFI Shell from file system device]



7. Find Alias name of USB thumb drive in SHELL mode, you could press Page Up if too many Alias, it is fs1 in this case

```

770F,0xF8000,0x32000)
blk1 :Removable HardDisk - Alias hd18b0b fs1
      :PciRoot(0x0)/Pci(0x15,0x0)/USB(0x1,0x0)/HD(1,MBR,0x142
blk2 :HardDisk - Alias (null)
      :PciRoot(0x0)/Pci(0x12,0x0)/Sata(0x0,0xFFFF,0x0)/HD(1,G
0735,0x800,0xF9800)
blk3 :HardDisk - Alias (null)
      :PciRoot(0x0)/Pci(0x12,0x0)/Sata(0x0,0xFFFF,0x0)/HD(3,G
CB2B,0x12C000,0x8000)
blk4 :HardDisk - Alias (null)
      :PciRoot(0x0)/Pci(0x12,0x0)/Sata(0x0,0xFFFF,0x0)/HD(4,
DC63,0x134000,0x73FC800)
blk5 :HardDisk - Alias (null)
      :PciRoot(0x0)/Pci(0x12,0x0)/Sata(0x0,0xFFFF,0x0)/HD(5,
0644,0x7530800,0x794B000)
blk6 :BlockDevice - Alias (null)
      :PciRoot(0x0)/Pci(0x12,0x0)/Sata(0x0,0xFFFF,0x0)
blk7 :Removable BlockDevice - Alias (null)
      :PciRoot(0x0)/Pci(0x15,0x0)/USB(0x1,0x0)

Press ESC in 5 seconds to skip startup.nsh, any other key to co
Shell>
Shell> fs1:

fs1:\> cd Panda215i_GLK_V10_(20180717)\EFI
fs1:\Panda215i_GLK_V10_(20180717)\EFI> FLASH.nsh_

```

8. Input **fs1:** then press [Enter] key.  
 9. Enter the EFI folder ( eg:cd Panda215i\_GLK\_V10\_(20180717)\EFI )  
 10. Input "**FLASH.nsh**" then press [Enter] key.

```

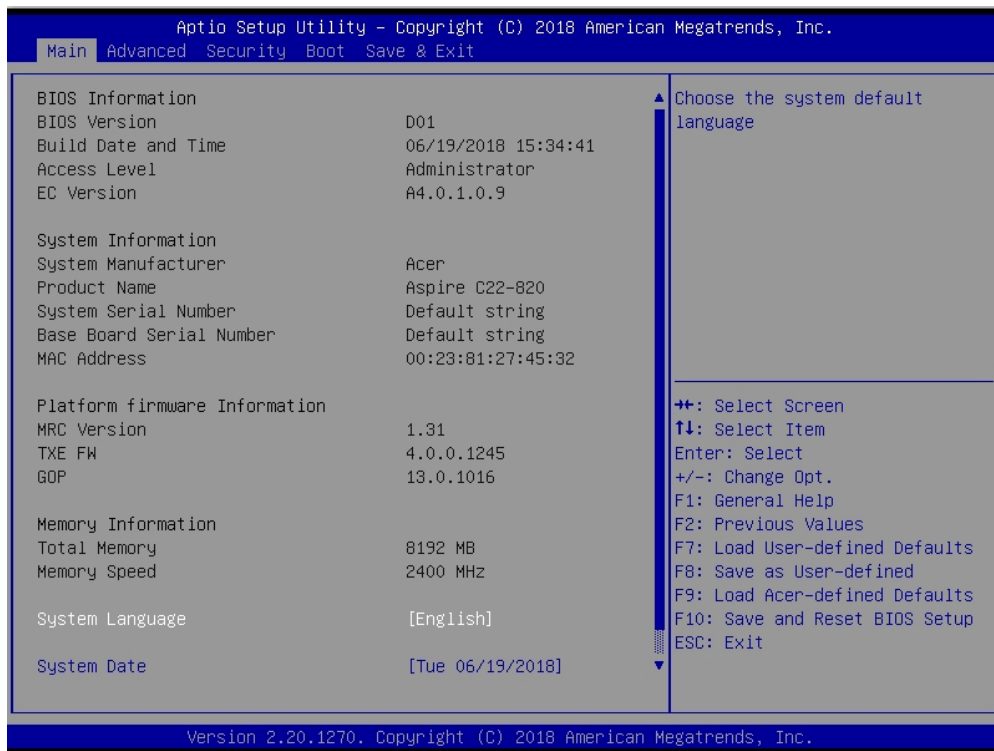
SPI Vendor      : MXIC
Block Number    : 0

Base Offset : 0x000000

Erasing...      : ██████████ -- Erase OK.
Erase Verify... : ██████████ -- Verify OK.
Programming...  : ██████████ -- Programming OK.
Verify...       : ██████████

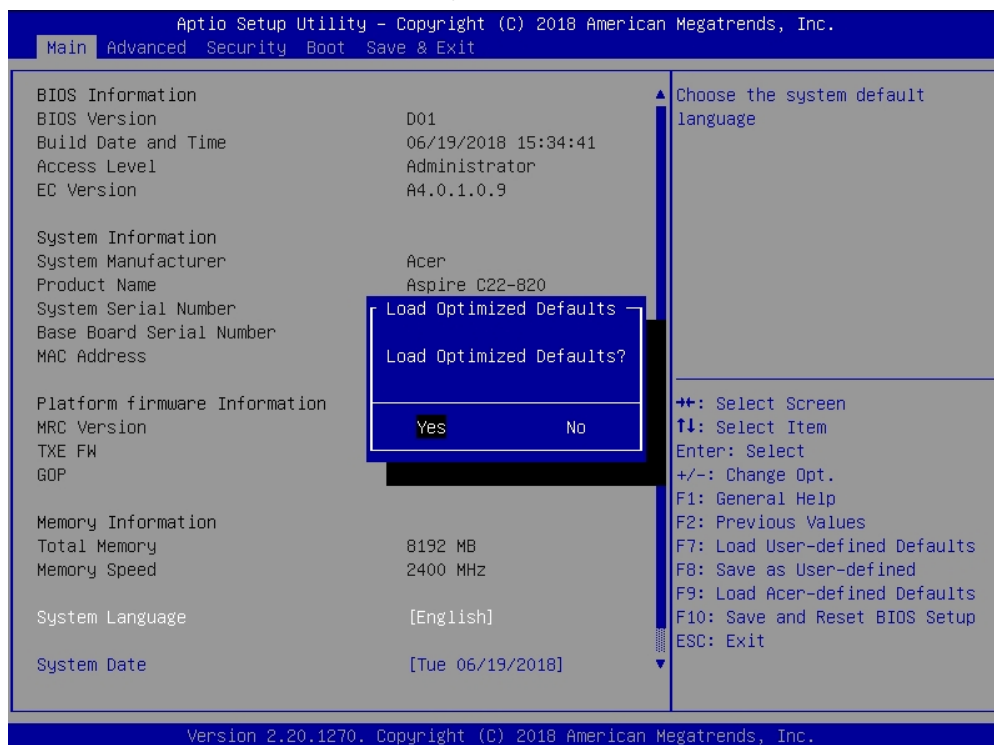
```

11. The machine will be auto shutdown after update EC firmware. **Then please unplug AC by manual.**  
 12. After finish flashing EC, please plug AC and press power button to boot machine and please press **[Del]** key to enter SetupUtility.

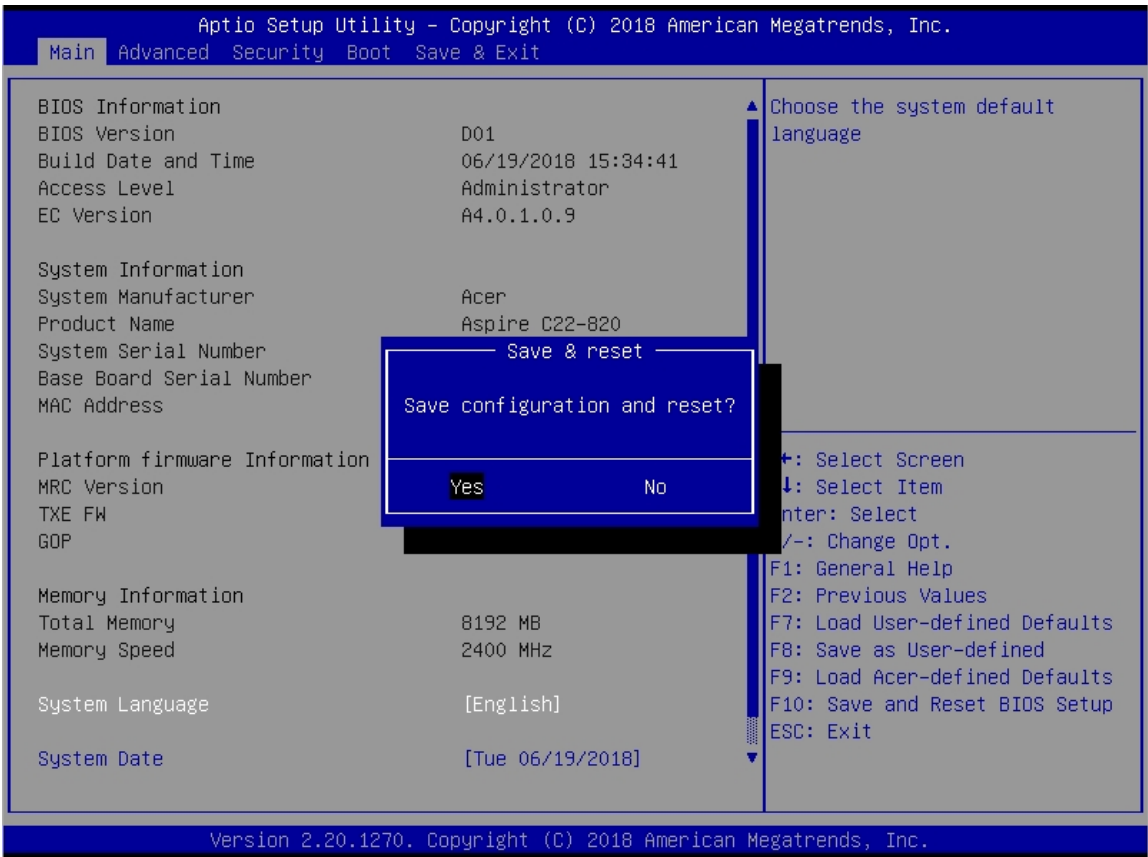


13. Press **[F9]** key to Load Optimized Default setting.

14. Select "Yes" and press **[Enter]** key.



15. Press **[F10]** to save configuration and Reset.



16.Flash finished.